

BeutiBond Xtreme

Single-Component, Total Universal Bond with Quad-Adhesive Technology



BeutiBond Xtreme
Single-Component,
Total Universal Bond with
Quad-Adhesive Technology

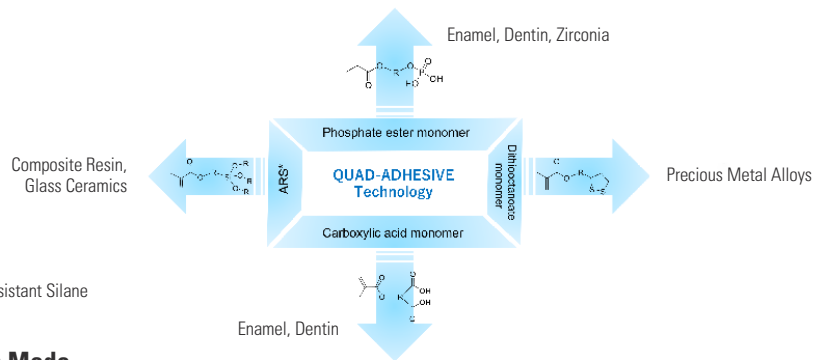
SERVE
PATIENTS
INCREASE
PRODUCTION
GO HOME
ON TIME!

Shofu is dedicated to manufacturing the highest quality products utilizing our innovative technologies to enhance minimally invasive cosmetic dentistry.

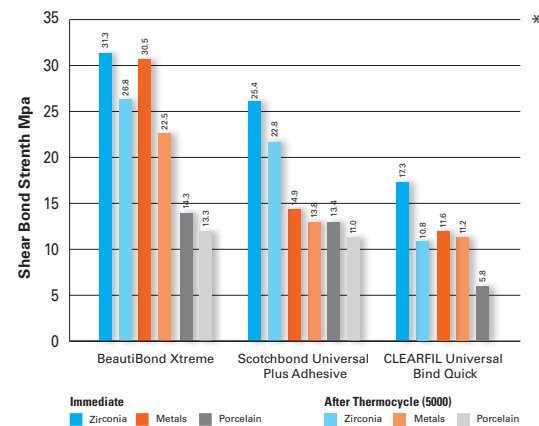
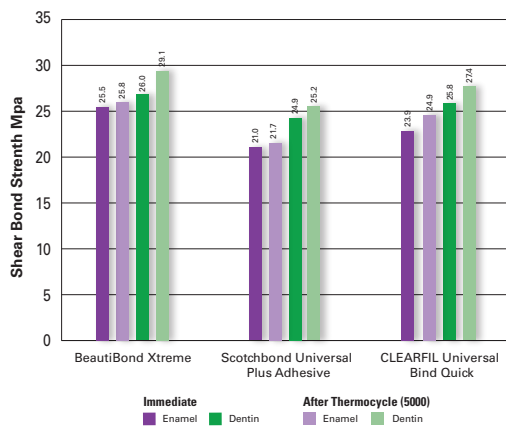
shofu.com
800.827.4638
customer-service@shofu.com

STRONG DURABLE BOND

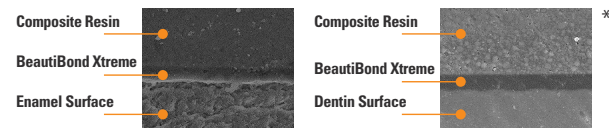
Due to **BeutiBond Xtreme's** unique Quad-Adhesive Technology, a single layer gives a strong, fast, and reliable bond. Ideal for direct and indirect restorations using any light-cure, dual-cure or self-cure material without the need for additional primers. The HEMA-free formula enables easy removal of solvents and eliminates the risk of sensitivity and bond hydrolysis. **BeutiBond Xtreme** is the truly universal adhesive that offers flexibility with self-etch, selective-etch, or total-etch—the choice is yours!



Self-Etch Mode

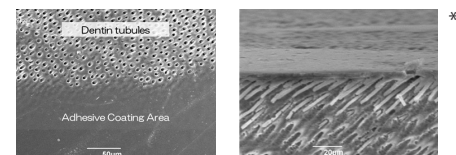


BeutiBond Xtreme's HEMA-free formula improves the stability of the adhesive layer, providing a thin, uniform layer (5µm) with minimized technique sensitivity. After the thermocycling process, no gaps were observed between the enamel and dentin adhesive interfaces, allowing for a strong bond and excellent marginal aesthetics.



PREVENTS SENSITIVITY

BeutiBond Xtreme provides an optimal seal to wet or dry dentin, penetrating deep into the dentinal tubules to create resin tags for secure adhesion, eliminating the risk of postoperative sensitivity and microleakage.



BeutiBond Xtreme coated dentin surface with a single layer application.

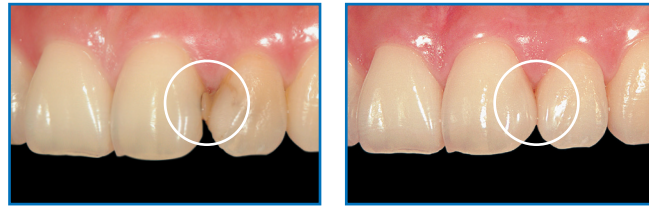
Cross sectional SEM image of sealed layer.

*Shofu internal testing



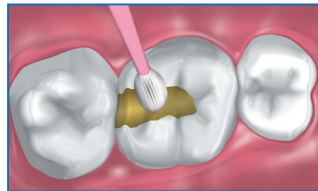
AESTHETIC

With extremely low film thickness (5µm), **BeutiBond Xtreme** eliminates marginal stain lines caused by brands with thicker bonding layers. **BeutiBond Xtreme** is the best choice when restorations must be picture-perfect.

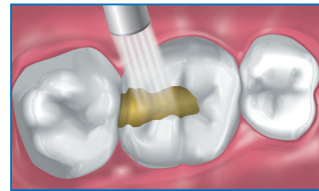


FAST AND EASY TO USE

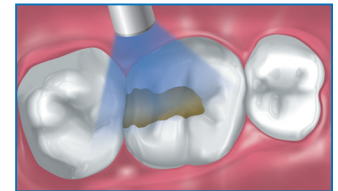
BeutiBond Xtreme's ease of use and simplified one-step application makes the bonding process consistently reliable and clinically efficient.



1. Apply BeutiBond Xtreme
Apply a single layer—No waiting time.
*When etching with phosphoric acid, rub for 20 seconds.



2. Air Dry
Gently air dry for 3 seconds then blow with greater force until the surface is glossy and has no visible movement.



3. Light-cure
LED light: 5 seconds
Halogen Light: 10 seconds

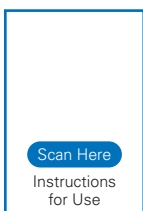
CLINICAL APPLICATIONS

- Direct restorations with light-cured composite resin
- Repair of fractured restorations with light-cured composite resin
- Post-cementation and core build-up
- Cementation of indirect restorations with light-cured/dual-cured resin cement
- Treatment of hypersensitive teeth or exposed root surface
- Sealing of tooth preparation (cavity or abutment) for indirect restorations

shofu.com
800.827.4638
customer-service@shofu.com



BeutiBond[®] Xtreme



- BeutiBond Xtreme Bottle**
Y2449
• 5 ml



- BeutiBond Xtreme Unit Dose**
Y2702 BeutiBond Xtreme Unit Dose Set
• 50 Unit Dose
• 50 Micro Brush

